



Interiors.

STRUCTURES OF ART



SOA Developments

048759300

info@soadevelopments.com

Floor 20, Control Tower,
Motor City, Dubai, U.A.E.



Contents.

OUR PURPOSE	P. 02
FROM PROPOSAL TO PROJECT	P. 06
SCALING SOTA	P. 08
W&C REAL ESTATE REIMAGINED	P. 12
PROJECT PROGENY	P. 18
BUILDING BERKELEY	P. 20
RENDERED RECREATION	P. 22
MEET THE TEAM	P. 24
CONTACT TO CREATE	P. 26

We are here to inspire, We lead with innovative trends, believing every space tells a unique story –

yours.

Our Featured Client Developers



We Create Commerical Art.

SOA is a Dubai-based design and construction agency specialising in fit-out solutions for the GCC and beyond.

Our work encompasses residential, retail and commercial projects.

Our team of experts excels in crafting practical, visually captivating, and highly functional commercial spaces. Through our meticulous design and development process, we ensure state-of-the-art outcomes that not only meet, but surpass our clients' requirements.



From Render to Reality.

1.

Our journey begins with personal consultation, clarifying goals, exploring the scope of your project.

4.

We then present you with our virtual reality renderings, allowing you to explore your prospective spaces. These are complemented by premium materials sourced from our leading suppliers.

2.

We embark on a detailed site analysis focusing on structure, orientation, and environmental specifics for design.

3.

Guided by your vision, we develop mood boards featuring curated layouts, materials and furnishings, alongside a preliminary BOQ.

5.

We transform our ideas into detailed technical schematics, adeptly navigating the intricacies of construction. Our team manages all documentation requirements, permits, and approvals to ensure seamless progress in development.

6.

At SOA we develop a program of works which fit your desired timeframe. Throughout construction, we will provide continuous support and detailed program updates to ensure you remain informed with progress from procurement to handover.

7.

As we approach the project's culmination, our team conducts a thorough final inspection to guarantee that the finished space meets our rigorous standards and exceeds your expectations.

8.

Your satisfaction, our promise: We will provide post-handover support to ensure your space continues to serve as a source of inspiration for years to come.



SOTA SALON, JVC



Our commitment lies in exceeding expectations with every project, showcasing our dedication to excellence in every detail.

Scaling SOTA Salon.

The incorporation of curved styles within this design helped enhance the ambiance of the space, elevating it with refinement and sophistication.

Whether manifested in a curved sofa, rounded table, or arched doorways, these organic shapes possess a remarkable power to evoke harmony and visual intrigue.



SOTA SALON, JVC





The renovated office space for White & Co Real Estate embodies a vision of creating a fun, futuristic, and employee-centric environment. It features a hybrid layout that promotes flexibility, with welcoming collaboration spaces and private booths for meetings.

One of the standout features is the innovative design of the meeting rooms, which are equipped with dynamic options including smart stools and a wall that serves both a fun and functional purpose, enhancing the overall meeting experience.

We take pride in our ability to understand our client's needs and work collaboratively to create outcomes that exceed expectations.

At SOA we are experts in building long-lasting relationships and beautiful spaces.

White & Co Real Estate Reimagined.

Our team of experienced designers, project managers, and artisans work closely with our clients to ensure that every detail of their project is carefully planned, executed, and delivered to their satisfaction.

With over 15 years of experience, we understand how to produce spectacular design outcomes.



FLOOR 7, WHITE & CO
REAL ESTATE



FLOOR 7, WHITE & CO
REAL ESTATE

The design includes standout features like LED walls, dynamic meeting rooms, and biophilic elements such as indoor plants for tranquility. A sophisticated color scheme of black, white, and wood flooring, accented with pops of green, enhances the overall inviting atmosphere, fostering creativity and productivity.







PROGENY, DIFC



Project Progeny.

Progeny's design ethos was inspired by the company's vibrant branding scheme. This approach boosts the philosophy of "livable workspaces," creating environments that feel homely and authentic. Through the careful use of color and variety, our design showcases harmony, reflecting the essence of Progeny's ethos.

Building Berkeley.

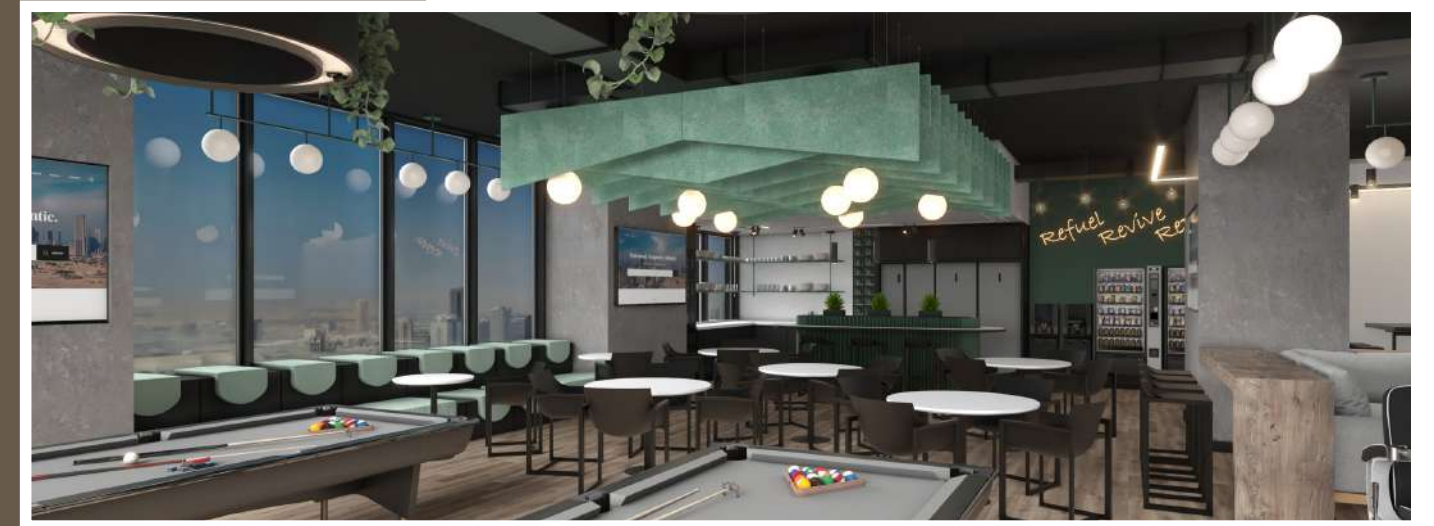
For this project, our design ethos revolved around seamlessly blending elements of class, subtlety, and monochrome shades to craft an ambiance of timeless elegance. Perfectly aligning with the company's vision and identity.





FLOOR 8, WHITE & CO
REAL ESTATE

The space includes a chic pantry area for refreshments, a geometric black and white tiled floor that contrasts beautifully with the warm tones, modern lighting and greenery accentuating the room's chill ambiance, perfectly balancing work with relaxation.



The Recreational Room at White & Co Real Estate boasts a relaxed, stylish vibe. The lounge area, surrounds an advanced golf simulator, offering a perfect escape for sports enthusiasts to unwind between meetings. A barber zone ensures agents look sharp, maintaining a professional edge.

Rendered Recreation.

Meet the Team.



FARHAN

ASST.
ESTIMATION
ENGINEER

ELYZA

OFFICE MANAGER

BIBIN

HEAD OF
ESTIMATION

JOHN

BUSINESS
DEVELOPMENT
MANAGER

SANDRA

LEAD INTERIOR
DESIGNER

CHRIS

MANAGING
DIRECTOR

RICK

GROUP OPERATIONS
DIRECTOR

MERVIN

FF&E DESIGNER

AAZEKIELL
MARI

INTERIOR DESIGNER

UMARUL
FAROOQUE

PROJECTS APPROVAL
ENGINEER

MEKHAEEL

PROJECT MANAGER

SHAZ

PROJECT MANAGER



**Ready to build your
next space?**

Contact to create.



SOA Developments

048759300

info@soadevelopments.com

Floor 20, Control Tower,
Motor City, Dubai, U.A.E.